

Navajo Tribal Utility Authority

An Enterprise of the Navajo Nation



2013

PROGRESS REPORT

UTILITIES:

Electric | Natural Gas | Water | Wastewater | Renewable Energy | Communications

REGION SERVED:

Northern Arizona | Northwestern New Mexico | Southeastern Utah

SERVICE AREA:

27,000 square miles



Greetings and Ya'aa'teeh,

It was 1959 when the Navajo Tribal Utility Authority was created. Today, 55 years later, the mission of NTUA continues which is to provide safe and reliable utility services throughout the Navajo Nation. What began then hasn't changed now. Extending utilities to as many homes as possible remains our goal. That's always been our principal focus and that hasn't changed since I began my duties here at NTUA.

I'm pleased to report that 2013 was another year of significant achievements. Most notably, NTUA completed installing 570 miles of fiber optic cable which will significantly enhance the wireless technology availability through more than half of the Navajo Nation. We also experienced an extreme deep freeze that caused havoc on our waterline system. This unfortunate experience was challenging; however, with assistance from our sister entities, we were able to restore water services and were able to justify federal reimbursement for costs incurred. As you will read in this Progress Report, our achievements have increased bringing more prestige and notability for the Navajo Nation. We understand that this is important to demonstrate that Navajo entities can manage and complete multi-million dollar multiple projects.

Our workforce has grown considerably over the past year. We are now close to 700 full time employees. This is important because it helps provide jobs for many families and supports many more extended families. More importantly, a strong workforce helps NTUA help others. We have an energetic and dedicated team. Our employees know the significance of their roles. Collectively we face challenges and overcome the obstacles to deliver much needed utilities throughout our service territory. I am proud of our employees because I appreciate their commitment to keep us on course to fulfill our mission.

Over the years I have seen how utility connection improves the lives of families. I have heard new customers say Ah'ee'ee. I realize the grateful deep meaning of the phrase. Sometimes we easily forget the simple gratitude, forgetting that there are still many families who lack basic utility services. At NTUA we will not forget and it is our collective goal to make a positive difference and reduce the unconnected numbers.

We look forward to the year ahead. We adhere to the phrase Naan'daal'nish – We work for You. I am confident that we will do our part to meet and exceed that expectation. As a team, we welcome your encouragement and support as tribal leaders as we move forward to accomplish the mission that was created in 1959.

Sincerely,



Walter W. Haase, P.E.
NTUA General Manager



General Manager Walter Haase presents Phillip Muzzie - Auto Mechanic Journeyman from Chinle District, his 40 year Service Award at the 2013 ESA Ceremony

It's here:

NAVAJO NATION MIDDLE/LAST MILE BROADBAND NEWEST COMMUNICATION TECHNOLOGY OPTIONS FOR THE NAVAJO NATION



In March 2010, NTUA received a \$32.2 million grant for a \$46 million project to build a fiber and microwave infrastructure throughout the central core of the Navajo Nation. The project received the grant funding from the U.S. Department of Commerce National Telecommunications and Information Administration (NTIA). The project brings new technology to homes, hospitals, businesses, and schools throughout the Navajo Nation, giving more people and businesses access to communication services and filling a significant void in technology that has always existed the southwest. The project showcases a Navajo Nation entity's capability for managing a major multi-million dollar project from inception to production.

FIBER AND TOWER CONSTRUCTION

Once the grant was in place, NTUA went to work. In two years, NTUA installed 570 miles of high quality internet broadband service covering more than 50 percent of the Navajo Nation. The project extended fixed and mobile broadband internet service to over 30,000 households and 1,000 businesses in 15 of the largest communities on the Navajo Nation, including Window Rock, Shiprock, Kayenta, Chinle, Ganado, and Dilkon.

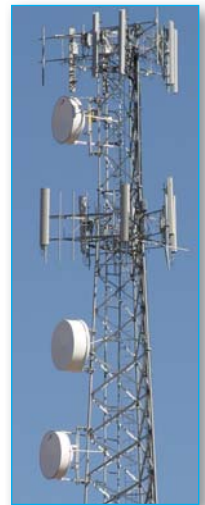
Alongside the fiber optic installation, NTUA also expanded a tower and microwave network to accommodate the projected increases in communication throughout the Navajo Nation. The project started with the existing 59 NTUA and added 40 more to the network. The towers were prepared to house LTE (long-term evolution) and microwave equipment. The network of the towers helps to strengthen the fixed and mobile communication signals. This vast network is 100 percent owned and managed by NTUA.



NEW BUSINESS OPPORTUNITIES UNFOLD

With vast fixed fiber system and an extensive tower network in place, NTUA will gain an additional operating revenue source for the tribal enterprise through leasing of tower space. This segment of the program allows communication companies to consider leasing space on NTUA. This opportunity is not only company friendly, it allows consumers in the region to have access to enhance mobile communication systems.

Another new business segment is a joint venture called NTUA Choice Wireless. Along with Broadband grant co-applicant, Commnet Wireless, the joint venture was formed with NTUA owning 51 percent and Commnet at 49 percent. NTUA Choice Wireless combines the strengths of the telecommunications and utility industries to form a company to provide quality wireless services to the Navajo Nation. This venture creates a first for the Navajo Nation – it's the first time the Navajo people are majority owners of a high-speed, wireless internet, and mobile telephone system.



Alongside the Broadband project, NTUA has built a certified Tier 3 Data Center. This is a facility that serves as a component to the massive NTUA Last Mile-Middle Mile Broadband fiber/wireless internet project. The commercial

Data Center is a high-tech warehouse that businesses, companies, tribal programs and various agencies can use when they need a data center solution. It's a high level technology facility that provides secure, uninterrupted

operation of applications and servers. There is no other facility of its kind here within the Four Corners region. The Data Center opened in the fall of 2013. The grand opening was attended by Navajo Nation officials, congressional representatives, and state officials. The facility is operating as part of the NTUA business structure. The Data Center is owned by the Navajo Nation people and operated by NTUA, an enterprise of the Navajo Nation. Currently, NTUA is focusing on business development to attract new customers.



POSITIVE RENEWAL: FEDERAL LOAN FOR ELECTRIC CONSTRUCTION

Late in 2013, NTUA received good news from the USDA Rural Utilities Services division that it approved a nearly \$168 million dollar loan to improve electric service in rural communities. This is the second time in recent years that NTUA was approved for a

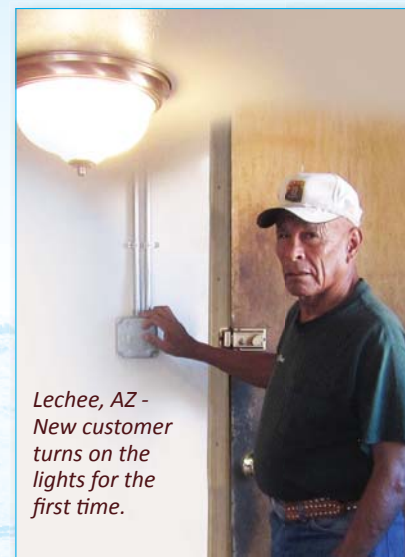
multi-million dollar RUS loan of over \$100 million. In the application process, NTUA demonstrated that the prior loan was used for what it was intended and was applied to electrical connection for thousands of families. With the new approved loan, NTUA

will build approximately 1,215 miles of electric line in addition to other system improvements. The loan details are being finalized and NTUA hopes that it may start drawing from this loan by the second quarter of 2014.

A PARTNERSHIP OF PROGRESS

NTUA and the Salt River Project (managing owner of the Navajo Generating Station) agreed to lead a group of partners to construct new electric lines to homes within the Lechee Chapter community, located southeast of Page, Arizona. Most

of the families have been on the electrical extension waiting list for many years and received the good news once the partnership was announced. The Lechee extension project calls for the building approximately 82 miles of electric line to serve 60 families. The overall budget is estimated at \$4.5 million. Phase I of the project was completed in mid-2013 and connected 17 families. Phase II will get underway in late 2014 and is expected to serve 28 families. NTUA electric construction crews spent most of this past holiday season scattering and framing poles along the construction route. Funding contributors included:



Lechee, AZ - New customer turns on the lights for the first time.

NTUA, SRP, Lechee Chapter, Navajo Nation AML, and the Navajo Nation Community Development Block Grant.



PURCHASING A NEW ELECTRIC LINE FOR UTAH NAVAJO

NTUA and Rocky Mountain Power have reached an agreement to transfer Rocky Mountain Power electric facilities on Navajoland in southeastern Utah. It's a transaction that has been two years in the making. The agreement is subject to re-

view and approval by both the Navajo Nation Council and Public Service Commission of Utah. There are hundreds of Navajo households who will be transferred to NTUA. It was important for NTUA to pursue this transfer to improve the accessibility of electricity to

families within the boundaries of the Navajo Nation. NTUA was told that there are a number of Navajo families who have been waiting years for electrical power. It will be another goal of NTUA to connect as many of these families to the main electrical grid.

LOOKING FOR OUTSIDE FINANCIAL OPTIONS FOR UTILITY CONSTRUCTION

When there is a financial opportunity worth exploring, NTUA investigates. NTUA is the only Navajo Nation entity to independently seek and secure outside funding for utility projects. Approval for the funding is reflective of the strong financial status of NTUA. In 2013, NTUA successfully refinanced the tax exempt portion of an earlier bond. The new bond extended the maturity to 7 years which is financially beneficial for utility operations. The new bond, which closed in January, 2014, provided \$3.8 mil-

lion in new money that was used to reimburse NTUA costs of water, wastewater, natural gas and solar energy capital expenditures. This is another important step for NTUA as it is borrowing outside the government realm based on its strong financial status.

NTUA is also working with Great Western Bank to develop a funding plan for \$15 million. It will be a long term loan that will fund the construction of a natural gas pipelines other utility projects. These building ventures will provide NTUA with \$800 thousand



yearly in operating income once completed. NTUA is currently waiting for word from the Bureau of Indian Affairs to serve as a loan guarantor before the Bank transfers funding to NTUA.

Smart Grid — INSTALLATION OF A NEW MULTI-UTILITY METERING SYSTEM

NTUA completed the replacement of outdated utility meters and installed new Smart Meters as part of a nationwide Smart Grid initiative. In 2010,



NTUA received a \$4.9 million dollar grant from the U.S. Department of Energy (U.S.DOE). The total cost for the electric meter portion of project is \$10.6 million, with \$4.9 million from the U.S. DOE and \$5.6 million contribution from NTUA. The initial plan was to update 28,000 electric meters; however, given our multi-utility network, NTUA decided to include water and natural gas meters. The U.S. DOE monitored the project and was impressed with the progress and granted NTUA an extension to replace all 40,000 electric meters. These new



meters will allow NTUA to read meters remotely, saving time and money. Customers will have more timely and detailed information of electricity consumption. The meters will give utility customers the opportunity to better monitor electricity usage wisely which will help with managing utility bills.

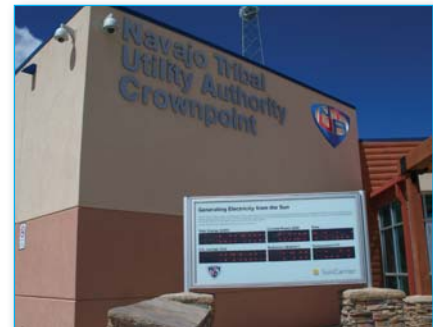
ENERGY EFFICIENCY AND CONSERVATION GRANT COMPLETE

NTUA closed out the \$6.1 million grant awarded by the U.S. Department of Energy. The grant established an alliance between NTUA and other Navajo Nation Divisions and Enterprises to introduce a broad range of programs focusing on Energy Efficiency and Conservation. NTUA was awarded the largest tribal allocation in the United States and was selected to be the lead agency for the Navajo Nation application. The Energy Efficiency and Conservation project included: energy auditing for

400 residential and commercial buildings on the Navajo Nation; energy audit implementation and weatherization services such as installation of energy efficient appliances and systems, energy efficient windows and doors, roofing, and wall insulation; energy efficient design elements incorporated into new NTUA buildings in Chinle and Crownpoint and energy efficient upgrades for district offices and corporate headquarters; installation of 1,080W and 1800W Solar & Wind-hybrid power systems featuring refrigeration are in the process of being installed throughout the NTUA service area; development of renewable energy learning modules (awareness, informational, educational) in conjunction with photovoltaic (solar energy) generation plants at NTUA facilities; construction of solar energy farms at Chinle, Fort Defiance, Crownpoint and Dilkon NTUA offices which marked the



first step into demonstrating that renewable energy is possible on the Navajo Nation; and partnership development with the Navajo Nation Telecommunications and Utilities Division to offer an energy efficient and energy conservation program for residents throughout the Navajo Nation.



RENEWABLE ENERGY DEVELOPMENT: EXPLORING SOLAR ENERGY TERRITORY

NTUA continues to search for development opportunities featuring renewable energy resources. This direction is part of an ongoing vision to create an energy economy that will pave the way for economic development possibilities for the Navajo Nation. These efforts will shape a long-term energy strategy for NTUA and ensure increased energy development for the future of the Navajo Nation, including



the benefit of the Navajo people.

The Navajo Nation is extremely attractive geologically for solar energy generation development. To accelerate solar deployment, NTUA is partnering with the U.S. Environmental Protection

Agency to identify and prioritize sites for solar developments. To date, NTUA has installed the nine large solar panels in four different locations as a demonstration that large scale solar panel construction is possible on Navajo land. These panels are the largest solar energy panels existing on the Navajo Nation. In addition, NTUA is exploring other solar energy development opportunities.

HANDLING THE BIG FREEZE

An unprecedented deep freeze last year caused mutual frustration for water customers and NTUA water crews. The situation created cooperative partnerships between NTUA, the Navajo Nation, and the Indian Health Service. The Navajo Nation looked to the federal government for a disaster declaration and qualified for funding through the Federal Emergency Management Administration (FEMA). This declaration allowed NTUA to pool together crew assistance from the Navajo Engineering Construction Authority (NECA) and the Salt River Project (SRP). After a month of concentrated effort, the outage calls were reduced and miles of broken water lines were replaced and repaired.



NECA and SRP give NTUA a helping hand

COMMUNITY AWARENESS

NTUA offers an extensive bilingual customer educational program to generate and foster a better understanding of NTUA operations, including programs that will be of long-term financial benefit to the

customer. Programs include short workshops to further educate customers, such as energy and water conservation, and utility safety, especially for children and the elderly.



COMMUNITY SERVICE IS PART OF THE NTUA MISSION

Our employees consider their communities as one large extended family. There is no separation between work and community. This has always been the case at NTUA. Our community service is our Ke' project and it is

a never-ending responsibility that we continue to embrace. Employees do not hesitate to be a part of community events, including runs, walks, and other activities by donating time, money and or supplies. When people say Ah'ee'ee

to our employees, we consider it a privilege earned. We accept that appreciation with gratitude that we are able to help and serve and support our communities.

NTUA receives thank you photos from U.S. Military personnel serving throughout the world.



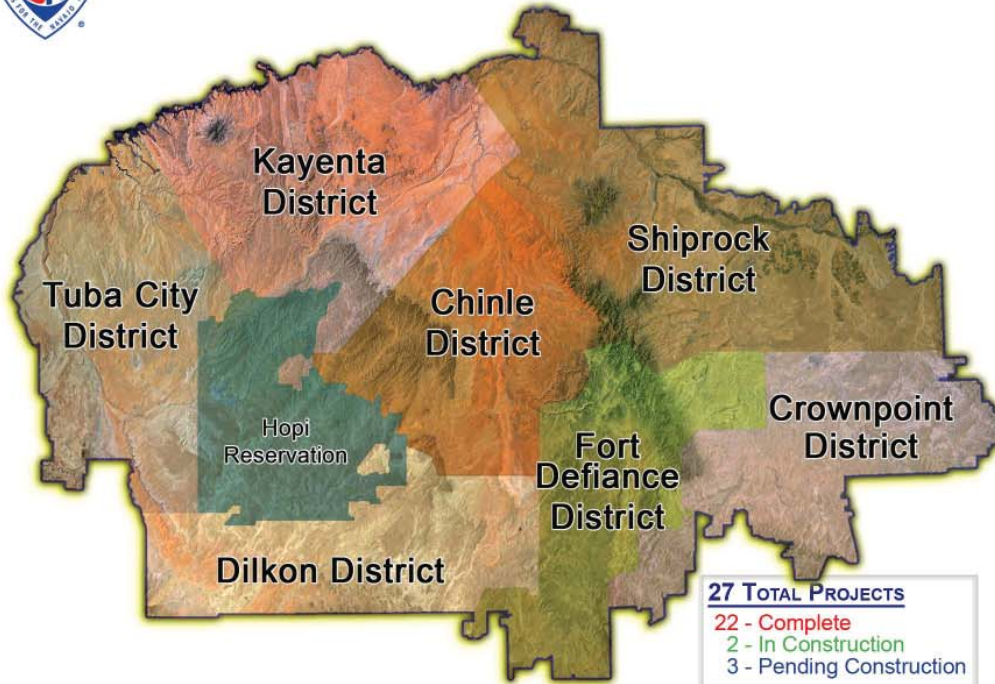
NAVAJO TRIBAL UTILITY AUTHORITY
AN ENTERPRISE OF THE NAVAJO NATION

UTILITY CONSTRUCTION PROJECTS





2013 Community Power Line Projects



Actual:
27 Projects
210 Families and
158.76 Miles of Line
Initial Target: 15 Projects, 194 Families and 122.55 Miles of Line

Actual Budget:
\$11,343,352.56
(\$3,059,763.99 NTUA Contribution)

Initial Budget: \$7,859,954.39
(\$297,734.40 NTUA Contribution)

27 TOTAL PROJECTS
 22 - Complete
 2 - In Construction
 3 - Pending Construction

CHINLE DISTRICT	
Location	Families
Forest Lake.....	0
Neutral Conductor Removal	
Low Mountain	0
Pole Replacement	
TOTAL FAMILIES: 0	
Sub-Total:	
\$331,317.97	

FORT DEFIANCE DISTRICT	
Location	Families
Nahatzhill.....	1
(Verizon Wireless Cell Tower)	
Wide Ruins	7
(Pine Springs Scattered)	
Nahatzhill.....	0
Barth Lake Pole Replacement	
Fort Defiance.....	0
Window Rock Event Center	
TOTAL FAMILIES: 8	
Sub-Total:	
\$611,798.75	

DILKON DISTRICT	
Location	Families
Cornfields	1
Tie-Line	
Cornfields	24
Navajo Station Ph I	
Cornfields	2
Navajo Station Ph II	
Jeddito	12
Sitting Rock	
Klagetoh	17
Summit/Grey Cactus	
TOTAL FAMILIES: 56	
Sub-Total:	
\$1,956,094.13	

KAYENTA DISTRICT	
Location	Families
Forest Lake	4
Black Mesa Scattered	
▲ Oljatoh	20
Douglas Mesa Ph V	
Kayenta	
▲ Skeleton Mesa Ph I ..	29
Skeleton Mesa Ph II ..	17
▲ Mexican Water.....	8
Scattered Ph II	
Dennehotso	
Desert Meadows.....	0
Mitchell Camp	6
3-Phase Underbuild	0
OEHE/IHS Water Well....	1
Black Mesa.....	1
Telecommunications Tower	
TOTAL FAMILIES: 86	
Sub-Total:	
\$3,769,893.49	

SHIPROCK DISTRICT	
Location	Families
Sanostee	0
(3-Phase Upgrade)	
Shiprock to R215.....	0
Pole Replacement	
Cudei to Red Valley	0
(1-Ph to 3-Ph conversion & 3-Ph Tie-Line)	
TOTAL FAMILIES: 0	
Sub-Total:	
\$2,090,926.83	

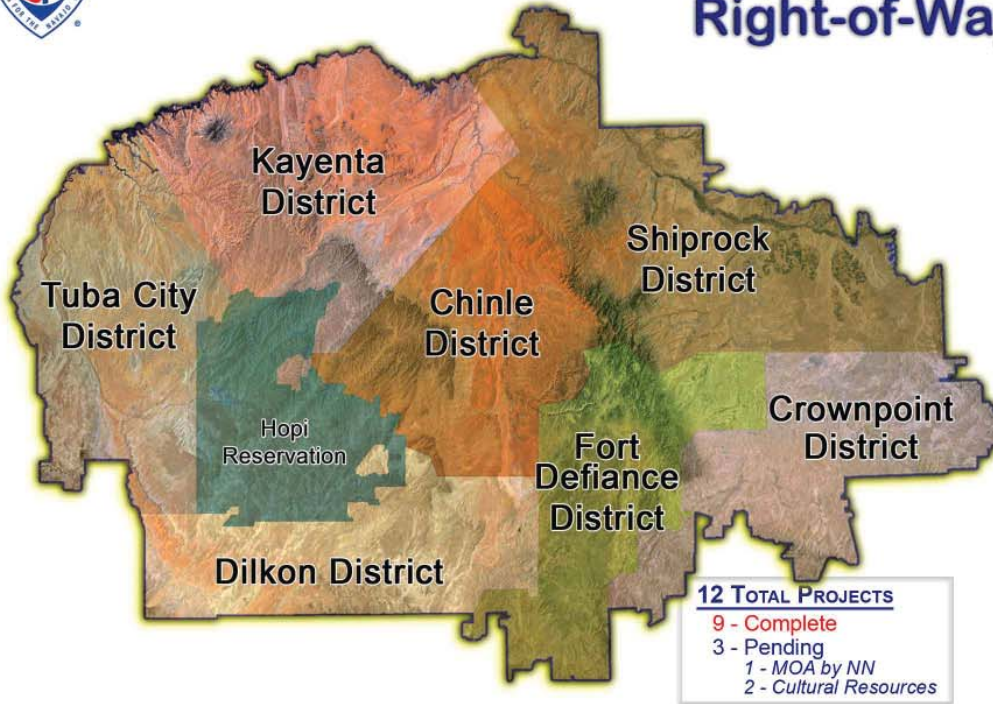
TUBA CITY DISTRICT	
Location	Families
Coppermine.....	7
Scattered Ph II	
Lechee.....	28
East Ph II	
Tonalea.....	25
Wildcat Peak	
TOTAL FAMILIES: 60	
Sub-Total:	
\$2,583,321.39	

Note:
 ▲ = Carry-Over from 2012



2013 Community Power Line Projects

Right-of-Way ONLY



Initial Target:
12 Projects
253 Families
and 149.33 miles of line

Proposed Budget:
\$1,663,365.02

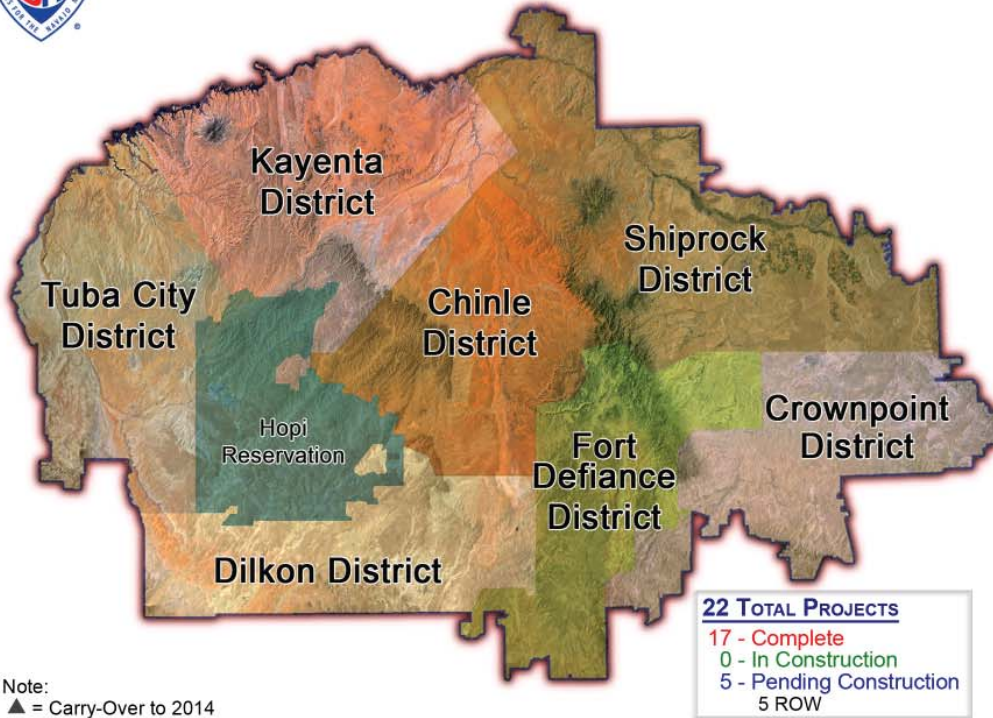
10/15/13 - GMI EC/PA Dept.-CHART E3b

CHINLE DISTRICT	DILKON DISTRICT	CROWNPOINT DISTRICT	KAYENTA DISTRICT	SHIPROCK DISTRICT	TUBA CITY DISTRICT																																																																																								
<table border="0" style="width: 100%;"> <tr> <th style="text-align: left; font-weight: normal;">Location</th> <th style="text-align: left; font-weight: normal;">Families</th> </tr> <tr> <td>Ganado - Ph V</td> <td>13</td> </tr> <tr> <td>Kinlichee</td> <td>33</td> </tr> <tr> <td>Da Ni Dzil Gai</td> <td></td> </tr> <tr> <td>▲ Rock Point</td> <td>18</td> </tr> <tr> <td>Scattered - Ph II</td> <td></td> </tr> <tr> <td colspan="2" style="text-align: right;">TOTAL FAMILIES: 64</td> </tr> <tr> <td colspan="2" style="text-align: right;">Sub-Total:</td> </tr> <tr> <td colspan="2" style="text-align: right;">\$313,467.17</td> </tr> </table>	Location	Families	Ganado - Ph V	13	Kinlichee	33	Da Ni Dzil Gai		▲ Rock Point	18	Scattered - Ph II		TOTAL FAMILIES: 64		Sub-Total:		\$313,467.17		<table border="0" style="width: 100%;"> <tr> <th style="text-align: left; font-weight: normal;">Location</th> <th style="text-align: left; font-weight: normal;">Families</th> </tr> <tr> <td>Wide Ruins</td> <td>16</td> </tr> <tr> <td>Tanner Springs - Ph I</td> <td></td> </tr> <tr> <td>Steamboat</td> <td>28</td> </tr> <tr> <td>Bear Springs - Ph I</td> <td></td> </tr> <tr> <td colspan="2" style="text-align: right;">TOTAL FAMILIES: 44</td> </tr> <tr> <td colspan="2" style="text-align: right;">Sub-Total:</td> </tr> <tr> <td colspan="2" style="text-align: right;">\$326,835.60</td> </tr> </table>	Location	Families	Wide Ruins	16	Tanner Springs - Ph I		Steamboat	28	Bear Springs - Ph I		TOTAL FAMILIES: 44		Sub-Total:		\$326,835.60		<table border="0" style="width: 100%;"> <tr> <td colspan="2" style="text-align: center;">TOTAL FAMILIES: 0</td> </tr> <tr> <td colspan="2" style="text-align: center;">Sub-Total:</td> </tr> <tr> <td colspan="2" style="text-align: center;">\$0.00</td> </tr> </table>	TOTAL FAMILIES: 0		Sub-Total:		\$0.00		<table border="0" style="width: 100%;"> <tr> <th style="text-align: left; font-weight: normal;">Location</th> <th style="text-align: left; font-weight: normal;">Families</th> </tr> <tr> <td>▲ Dennehotso</td> <td>31</td> </tr> <tr> <td>Tri-City</td> <td></td> </tr> <tr> <td>▲ Oljato</td> <td>16</td> </tr> <tr> <td>Halgaitoh Extension</td> <td></td> </tr> <tr> <td>Inscription House ...</td> <td>29</td> </tr> <tr> <td>To'hajilch'li</td> <td></td> </tr> <tr> <td>Kayenta.....</td> <td>19</td> </tr> <tr> <td>Skeleton Mesa - Ph II</td> <td></td> </tr> <tr> <td colspan="2" style="text-align: right;">TOTAL FAMILIES: 95</td> </tr> <tr> <td colspan="2" style="text-align: right;">Sub-Total:</td> </tr> <tr> <td colspan="2" style="text-align: right;">\$595,686.00</td> </tr> </table>	Location	Families	▲ Dennehotso	31	Tri-City		▲ Oljato	16	Halgaitoh Extension		Inscription House ...	29	To'hajilch'li		Kayenta.....	19	Skeleton Mesa - Ph II		TOTAL FAMILIES: 95		Sub-Total:		\$595,686.00		<table border="0" style="width: 100%;"> <tr> <td colspan="2" style="text-align: center;">TOTAL FAMILIES: 0</td> </tr> <tr> <td colspan="2" style="text-align: center;">Sub-Total:</td> </tr> <tr> <td colspan="2" style="text-align: center;">\$0.00</td> </tr> </table>	TOTAL FAMILIES: 0		Sub-Total:		\$0.00		<table border="0" style="width: 100%;"> <tr> <th style="text-align: left; font-weight: normal;">Location</th> <th style="text-align: left; font-weight: normal;">Families</th> </tr> <tr> <td>Lechee South- Ph III ..</td> <td>6</td> </tr> <tr> <td>▲ To'Nanees'dizi-PH II..</td> <td>11</td> </tr> <tr> <td>Shadow Mountain</td> <td></td> </tr> <tr> <td>Coalmine Canyon</td> <td>33</td> </tr> <tr> <td>Scattered</td> <td></td> </tr> <tr> <td colspan="2" style="text-align: right;">TOTAL FAMILIES: 50</td> </tr> <tr> <td colspan="2" style="text-align: right;">Sub-Total:</td> </tr> <tr> <td colspan="2" style="text-align: right;">\$427,376.25</td> </tr> </table>	Location	Families	Lechee South- Ph III ..	6	▲ To'Nanees'dizi-PH II..	11	Shadow Mountain		Coalmine Canyon	33	Scattered		TOTAL FAMILIES: 50		Sub-Total:		\$427,376.25	
Location	Families																																																																																												
Ganado - Ph V	13																																																																																												
Kinlichee	33																																																																																												
Da Ni Dzil Gai																																																																																													
▲ Rock Point	18																																																																																												
Scattered - Ph II																																																																																													
TOTAL FAMILIES: 64																																																																																													
Sub-Total:																																																																																													
\$313,467.17																																																																																													
Location	Families																																																																																												
Wide Ruins	16																																																																																												
Tanner Springs - Ph I																																																																																													
Steamboat	28																																																																																												
Bear Springs - Ph I																																																																																													
TOTAL FAMILIES: 44																																																																																													
Sub-Total:																																																																																													
\$326,835.60																																																																																													
TOTAL FAMILIES: 0																																																																																													
Sub-Total:																																																																																													
\$0.00																																																																																													
Location	Families																																																																																												
▲ Dennehotso	31																																																																																												
Tri-City																																																																																													
▲ Oljato	16																																																																																												
Halgaitoh Extension																																																																																													
Inscription House ...	29																																																																																												
To'hajilch'li																																																																																													
Kayenta.....	19																																																																																												
Skeleton Mesa - Ph II																																																																																													
TOTAL FAMILIES: 95																																																																																													
Sub-Total:																																																																																													
\$595,686.00																																																																																													
TOTAL FAMILIES: 0																																																																																													
Sub-Total:																																																																																													
\$0.00																																																																																													
Location	Families																																																																																												
Lechee South- Ph III ..	6																																																																																												
▲ To'Nanees'dizi-PH II..	11																																																																																												
Shadow Mountain																																																																																													
Coalmine Canyon	33																																																																																												
Scattered																																																																																													
TOTAL FAMILIES: 50																																																																																													
Sub-Total:																																																																																													
\$427,376.25																																																																																													

Note:
▲ = Carry-Over from 2012



2013 Natural Gas Construction - Commercial



Actual:
22 Commercial Customers

Initial Target: 8 Projects

Proposed Budget:

\$475,985.22

Initial Budget: 331,995.43

22 TOTAL PROJECTS
 17 - Complete
 0 - In Construction
 5 - Pending Construction
 5 ROW

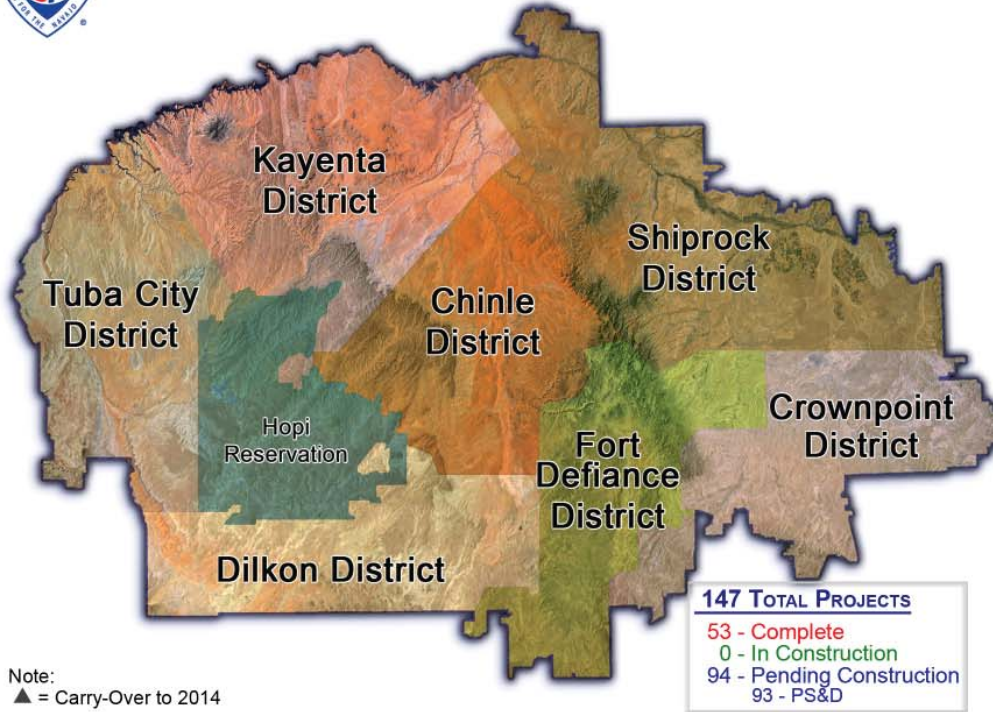
Note:
 ▲ = Carry-Over to 2014

DISTRICT	Location	Projects	Sub-Total
CHINLE DISTRICT	▲ Kinlichee BIA School ... (ROW)	1	Sub-Total: \$12,869.92
	TOTAL CUSTOMERS:	1	
CROWNPOINT DISTRICT	Crownpoint NDOT	1	Sub-Total: \$23,166.14
	Crownpoint Elem. Sch	1	
TOTAL CUSTOMERS:		2	
FORT DEFIANCE DISTRICT	WRUSD	1	Sub-Total: \$87,022.88
	Navajo Fire Station	1	
	Youth Center Relocate	1	
	NHA CSD Building	1	
	FD Youth Center Upgrade	1	
TOTAL CUSTOMERS:		5	
KAYENTA DISTRICT	IHS Kayenta Ph I	1	Sub-Total: \$157,804.21
	▲ IHS Kayenta Ph II (ROW)	1	
	NHA HMO	1	
	Public Safety Ph I	1	
	Public Safety Ph II	1	
	Monument Valley Inn	1	
	▲ Kayenta Laundromat (ROW)	1	
TOTAL CUSTOMERS:		7	
SHIPROCK DISTRICT	Dine College	1	Sub-Total: \$34,396.93
	NHA HMO	1	
	▲ Upper Fritland (ROW)	1	
TOTAL CUSTOMERS:		4	
TUBA CITY DISTRICT	Dine College	1	Sub-Total: \$155,013.14
	▲ Tuba City -Main (ROW)	1	
TOTAL CUSTOMERS:		2	
DILKON DISTRICT	BIA Fire Station	1	Sub-Total: \$5,712.00
	TOTAL CUSTOMERS:	1	

1/16/14 - GM EC/PA Dept.-CHART NG1d



2013 Natural Gas Construction - Residential



Actual:
147 Residential Customers

Initial Target: 45

Proposed Budget:

\$146,717.79

Initial Target: \$78,604.36

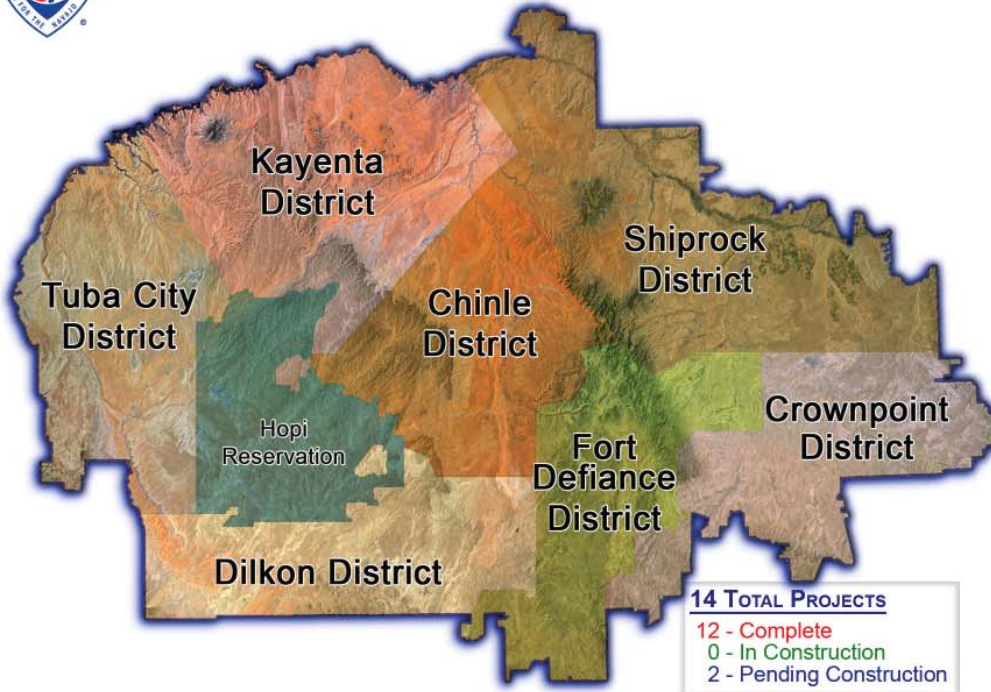
Note:
 ▲ = Carry-Over to 2014

1/16/14 - GM EC/PA Dept.-CHART NG2d

CHINLE DISTRICT	CROWNPOINT DISTRICT	FORT DEFIANCE DISTRICT	KAYENTA DISTRICT	SHIPROCK DISTRICT	TUBA CITY DISTRICT																																				
<table border="0"> <tr> <td><i>Location</i></td> <td><i>Families</i></td> </tr> <tr> <td>Many Farms NHA.....</td> <td>20</td> </tr> <tr> <td>Chinle NHA.....</td> <td>1</td> </tr> <tr> <td>Yazzie.....</td> <td>1</td> </tr> <tr> <td>▲NHA Kinlichee (PS&D) ..</td> <td>1</td> </tr> <tr> <td>▲NHA Chinle (PS&D)</td> <td>65</td> </tr> </table>	<i>Location</i>	<i>Families</i>	Many Farms NHA.....	20	Chinle NHA.....	1	Yazzie.....	1	▲NHA Kinlichee (PS&D) ..	1	▲NHA Chinle (PS&D)	65	<p>TOTAL CUSTOMERS: 0</p>	<table border="0"> <tr> <td><i>Location</i></td> <td><i>Families</i></td> </tr> <tr> <td>Fort Defiance NHA.....</td> <td>1</td> </tr> <tr> <td>Navajo NHA.....</td> <td>22</td> </tr> <tr> <td>Karighan Estates</td> <td>6</td> </tr> <tr> <td>Phase IIIa</td> <td></td> </tr> <tr> <td>▲Karighan Estates.....</td> <td>10</td> </tr> <tr> <td>Phase IIIb (PS&D)</td> <td></td> </tr> </table>	<i>Location</i>	<i>Families</i>	Fort Defiance NHA.....	1	Navajo NHA.....	22	Karighan Estates	6	Phase IIIa		▲Karighan Estates.....	10	Phase IIIb (PS&D)			<table border="0"> <tr> <td><i>Location</i></td> <td><i>Families</i></td> </tr> <tr> <td>Shiprock NHA.....</td> <td>3</td> </tr> </table>	<i>Location</i>	<i>Families</i>	Shiprock NHA.....	3	<table border="0"> <tr> <td><i>Location</i></td> <td><i>Families</i></td> </tr> <tr> <td>▲Tuba City RHCC</td> <td>18</td> </tr> <tr> <td>(PS&D)</td> <td></td> </tr> </table>	<i>Location</i>	<i>Families</i>	▲Tuba City RHCC	18	(PS&D)	
<i>Location</i>	<i>Families</i>																																								
Many Farms NHA.....	20																																								
Chinle NHA.....	1																																								
Yazzie.....	1																																								
▲NHA Kinlichee (PS&D) ..	1																																								
▲NHA Chinle (PS&D)	65																																								
<i>Location</i>	<i>Families</i>																																								
Fort Defiance NHA.....	1																																								
Navajo NHA.....	22																																								
Karighan Estates	6																																								
Phase IIIa																																									
▲Karighan Estates.....	10																																								
Phase IIIb (PS&D)																																									
<i>Location</i>	<i>Families</i>																																								
Shiprock NHA.....	3																																								
<i>Location</i>	<i>Families</i>																																								
▲Tuba City RHCC	18																																								
(PS&D)																																									
TOTAL CUSTOMERS: 87	TOTAL CUSTOMERS: 0	TOTAL CUSTOMERS: 39	TOTAL CUSTOMERS: 0	TOTAL CUSTOMERS: 3	TOTAL CUSTOMERS: 18																																				
Sub-Total: \$50,527.03		Sub-Total: \$71,435.40		Sub-Total: \$1,755.36	Sub-Total: \$23,000.00																																				



2013 Civil Engineering Department - Capital Projects



Actual:
14 Capital Projects
Initial Target: 11 Projects

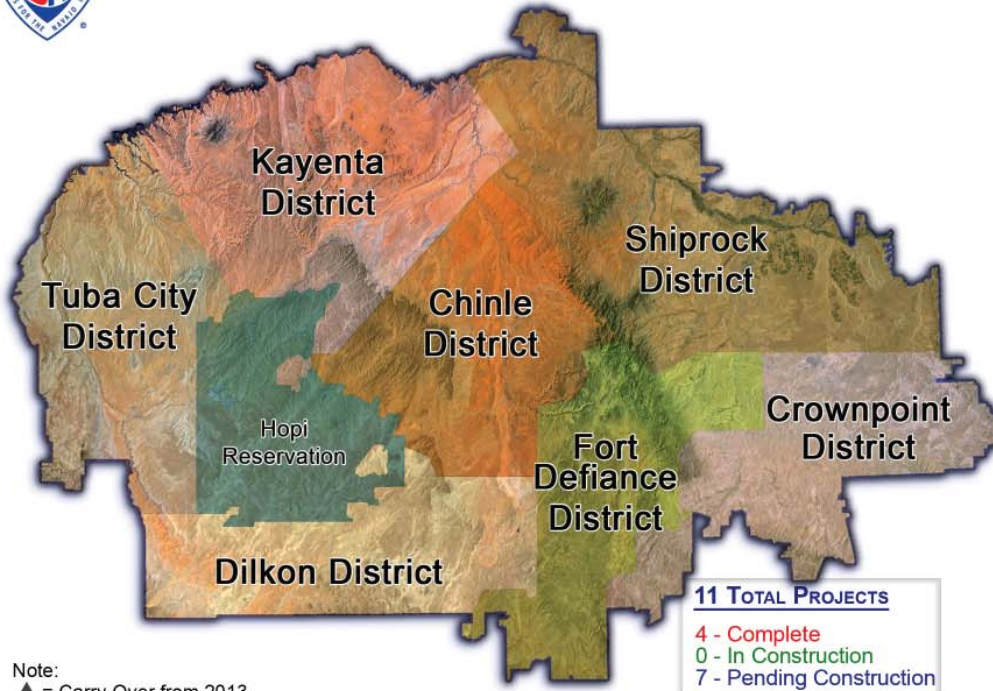
Proposed Budget:
\$18,319,607
Initial Budget: \$17,741,169

11/6/13 - GM EC/PA Dept.-CHART W/rd

CHINLE DISTRICT		CROWNPOINT DISTRICT		DILKON DISTRICT		FORT DEFIANCE DISTRICT		SHIPROCK DISTRICT		TUBA CITY DISTRICT	
Location	Projects	Location	Projects	Location	Projects	Location	Projects	Location	Projects	Location	Projects
Chinle WTP Ph I	1	Church Rock	1	Jeddito	1	Window Rock WWTP	1	Aneth	1	Cameron	1
Install Iron / Manganese Removal Plant		Install PRV by-pass		Community Lagoon Upgrade		Upgrade Ph I		Wastewater Line Wash Crossing		Relocate & Install Road Crossing	
Ganado	1	Fire Rock Casino	1	Twin Arrows	1	US HWY 491 Seg 4	1				
New Liftstation		Meter Pt, Upgrade Relocation		New Water facilities		A to E Tank	1				
				Twin Arrows WWTP	1	Booster Upgrade					
				New Facilities							
				Birdsprings	1						
				Booster Upgrade							
				Jeddito	1						
				Chlorine Injection							
TOTAL PROJECTS	2	TOTAL PROJECTS:	2	TOTAL PROJECTS:	5	TOTAL PROJECTS:	3	TOTAL PROJECTS:	1	TOTAL PROJECTS:	1



2013 Water Construction - Construction Team



**Proposed:
 11 Projects**
Initial Projects: 5

**Proposed Budget:
 \$1,148,470.78**
Initial Budget: \$267,591

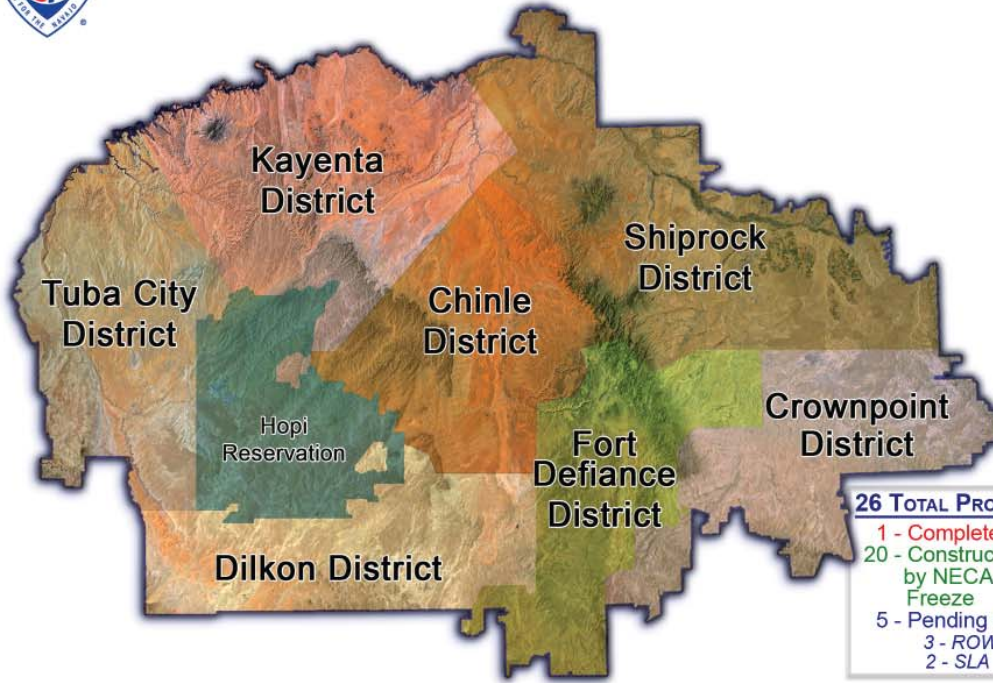
Note:
 ▲ = Carry-Over from 2013

11/6/13 - GM EC/PA Dept.-CHART Wzd

CHINLE DISTRICT	CROWNPOINT DISTRICT	DILKON DISTRICT	FORT DEFIANCE DISTRICT	SHIPROCK DISTRICT	TUBA CITY DISTRICT																																																																																												
<table border="1"> <thead> <tr> <th>Location</th> <th>Projects</th> </tr> </thead> <tbody> <tr> <td>▲ Shirley Lagoon</td> <td>1</td> </tr> <tr> <td>Shirley Septic Tank</td> <td>1</td> </tr> <tr> <td>TOTAL PROJECTS: 1</td> <td></td> </tr> <tr> <td>Sub-Total:</td> <td></td> </tr> <tr> <td>\$41,000.66</td> <td></td> </tr> </tbody> </table>	Location	Projects	▲ Shirley Lagoon	1	Shirley Septic Tank	1	TOTAL PROJECTS: 1		Sub-Total:		\$41,000.66		<table border="1"> <thead> <tr> <th>Location</th> <th>Projects</th> </tr> </thead> <tbody> <tr> <td>▲ Crownpoint</td> <td>1</td> </tr> <tr> <td>Watering Point (ROW)</td> <td></td> </tr> <tr> <td>▲ Whitehorse Lake.....</td> <td>1</td> </tr> <tr> <td>Watering Point (ROW)</td> <td></td> </tr> <tr> <td>FRNC.....</td> <td>1</td> </tr> <tr> <td>TOTAL PROJECTS: 3</td> <td></td> </tr> <tr> <td>Sub-Total:</td> <td></td> </tr> <tr> <td>\$364,411.74</td> <td></td> </tr> </tbody> </table>	Location	Projects	▲ Crownpoint	1	Watering Point (ROW)		▲ Whitehorse Lake.....	1	Watering Point (ROW)		FRNC.....	1	TOTAL PROJECTS: 3		Sub-Total:		\$364,411.74		<table border="1"> <thead> <tr> <th>Location</th> <th>Projects</th> </tr> </thead> <tbody> <tr> <td>▲ Greasewood</td> <td>1</td> </tr> <tr> <td>Watering Point (ROW)</td> <td></td> </tr> <tr> <td>TOTAL PROJECTS: 1</td> <td></td> </tr> <tr> <td>Sub-Total:</td> <td></td> </tr> <tr> <td>\$54,163</td> <td></td> </tr> </tbody> </table>	Location	Projects	▲ Greasewood	1	Watering Point (ROW)		TOTAL PROJECTS: 1		Sub-Total:		\$54,163		<table border="1"> <thead> <tr> <th>Location</th> <th>Projects</th> </tr> </thead> <tbody> <tr> <td>▲ Fort Defiance</td> <td>1</td> </tr> <tr> <td>Watering Point (PSD)</td> <td></td> </tr> <tr> <td>TOTAL PROJECTS: 1</td> <td></td> </tr> <tr> <td>Sub-Total:</td> <td></td> </tr> <tr> <td>\$54,163</td> <td></td> </tr> </tbody> </table> <table border="1"> <thead> <tr> <th>Location</th> <th>Projects</th> </tr> </thead> <tbody> <tr> <td>Kayenta I.H.S.</td> <td>1</td> </tr> <tr> <td>TOTAL PROJECTS: 1</td> <td></td> </tr> <tr> <td>Sub-Total:</td> <td></td> </tr> <tr> <td>\$206,406.38</td> <td></td> </tr> </tbody> </table>	Location	Projects	▲ Fort Defiance	1	Watering Point (PSD)		TOTAL PROJECTS: 1		Sub-Total:		\$54,163		Location	Projects	Kayenta I.H.S.	1	TOTAL PROJECTS: 1		Sub-Total:		\$206,406.38		<table border="1"> <thead> <tr> <th>Location</th> <th>Projects</th> </tr> </thead> <tbody> <tr> <td>▲ Burnham Chapter</td> <td>1</td> </tr> <tr> <td>Watering Point (ROW)</td> <td></td> </tr> <tr> <td>TOTAL PROJECTS: 1</td> <td></td> </tr> <tr> <td>Sub-Total:</td> <td></td> </tr> <tr> <td>\$54,163</td> <td></td> </tr> </tbody> </table>	Location	Projects	▲ Burnham Chapter	1	Watering Point (ROW)		TOTAL PROJECTS: 1		Sub-Total:		\$54,163		<table border="1"> <thead> <tr> <th>Location</th> <th>Projects</th> </tr> </thead> <tbody> <tr> <td>▲ Cameron Chapter</td> <td>1</td> </tr> <tr> <td>Watering Point (ROW)</td> <td></td> </tr> <tr> <td>ADOT Cameron.....</td> <td>1</td> </tr> <tr> <td>Water Relocation</td> <td></td> </tr> <tr> <td>TOTAL PROJECTS: 2</td> <td></td> </tr> <tr> <td>Sub-Total:</td> <td></td> </tr> <tr> <td>\$374,163</td> <td></td> </tr> </tbody> </table>	Location	Projects	▲ Cameron Chapter	1	Watering Point (ROW)		ADOT Cameron.....	1	Water Relocation		TOTAL PROJECTS: 2		Sub-Total:		\$374,163	
Location	Projects																																																																																																
▲ Shirley Lagoon	1																																																																																																
Shirley Septic Tank	1																																																																																																
TOTAL PROJECTS: 1																																																																																																	
Sub-Total:																																																																																																	
\$41,000.66																																																																																																	
Location	Projects																																																																																																
▲ Crownpoint	1																																																																																																
Watering Point (ROW)																																																																																																	
▲ Whitehorse Lake.....	1																																																																																																
Watering Point (ROW)																																																																																																	
FRNC.....	1																																																																																																
TOTAL PROJECTS: 3																																																																																																	
Sub-Total:																																																																																																	
\$364,411.74																																																																																																	
Location	Projects																																																																																																
▲ Greasewood	1																																																																																																
Watering Point (ROW)																																																																																																	
TOTAL PROJECTS: 1																																																																																																	
Sub-Total:																																																																																																	
\$54,163																																																																																																	
Location	Projects																																																																																																
▲ Fort Defiance	1																																																																																																
Watering Point (PSD)																																																																																																	
TOTAL PROJECTS: 1																																																																																																	
Sub-Total:																																																																																																	
\$54,163																																																																																																	
Location	Projects																																																																																																
Kayenta I.H.S.	1																																																																																																
TOTAL PROJECTS: 1																																																																																																	
Sub-Total:																																																																																																	
\$206,406.38																																																																																																	
Location	Projects																																																																																																
▲ Burnham Chapter	1																																																																																																
Watering Point (ROW)																																																																																																	
TOTAL PROJECTS: 1																																																																																																	
Sub-Total:																																																																																																	
\$54,163																																																																																																	
Location	Projects																																																																																																
▲ Cameron Chapter	1																																																																																																
Watering Point (ROW)																																																																																																	
ADOT Cameron.....	1																																																																																																
Water Relocation																																																																																																	
TOTAL PROJECTS: 2																																																																																																	
Sub-Total:																																																																																																	
\$374,163																																																																																																	



2013 Scattered Projects Department



**Actual:
26 Residential Customers**

**Budget:
\$886,713**

26 TOTAL PROJECTS
 1 - Complete
 20 - Construction to begin 2/24/14
 by NECA - Delay due to Winter Freeze
 5 - Pending Construction
 3 - ROW
 2 - SLA

1/17/14 - GM EC/PA Dept.-CHART W3c

CHINLE DISTRICT	
Location	Projects
Chinle	1
Ganado (SLA)	2
Round Rock	0
Nazlini	2
Kinlichee	2
Many Farms	0
TOTAL PROJECTS:	7

CROWNPOINT DISTRICT	
TOTAL PROJECTS: 0	
SHIPROCK DISTRICT	
TOTAL PROJECTS: 0	

DILKON DISTRICT	
Location	Projects
Wide Ruins	2
Greasewood	1
Cornfields	1
Cornfields	1
Whitecone (ROW)	1
TOTAL PROJECTS:	6

FORT DEFIANCE DISTRICT	
Location	Projects
Ft. Defiance (2-ROW)	2
Ft. Defiance	1
Pine Springs	2
Oak Springs	2
Rock Springs	0
Sawmill	1
St. Michaels	3
Steamboat	1
TOTAL PROJECTS:	12

KAYENTA DISTRICT	
Location	Projects
Oljatoh	1
TOTAL PROJECTS:	1

TUBA CITY DISTRICT	
Location	Projects
Coppermine	0
TOTAL CUSTOMERS:	0

NAVAJO TRIBAL UTILITY AUTHORITY
AN ENTERPRISE OF THE NAVAJO NATION

2014 FINANCIAL FORECAST



NAVAJO TRIBAL UTILITY AUTHORITY
2014 Financial Forecast

**22nd Navajo Nation
Council**

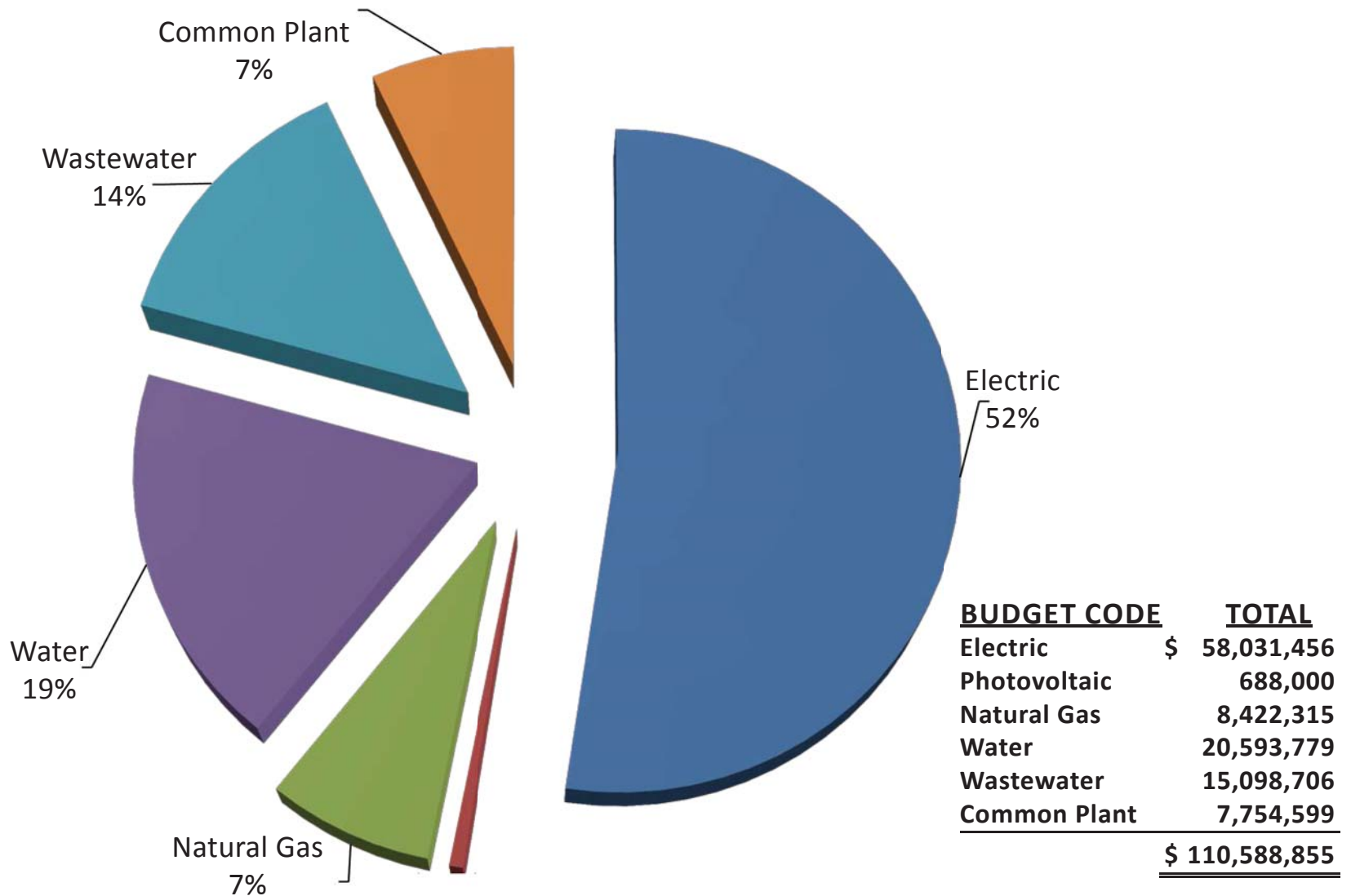
2014 Financial Forecast

	Electric	Gas	Water	Wastewater	Photovoltaic	Total
Operating Revenues						
Operating revenues	\$ 74,280,013	11,691,889	17,362,863	4,250,185	275,240	\$ 107,860,190
Telecommunication revenues	5,181,538	-	-	-	-	5,181,538
Other revenue adjustments	405,362	40,531	280,530	268,494	4,466	999,383
Agency revenues	495,000	-	-	-	-	495,000
Total operating revenues, net	<u>80,361,913</u>	<u>11,732,420</u>	<u>17,643,393</u>	<u>4,518,679</u>	<u>279,706</u>	<u>114,536,111</u>
Operating Expenses						
Electricity, gas, and water purchased for resale	33,747,081	6,260,751	1,250,777	-	-	41,258,609
Operation and maintenance	8,547,068	1,177,271	4,139,864	1,009,820	110,977	14,984,999
Customer accounts and sales	1,822,661	251,053	882,826	215,344	23,666	3,195,550
Administrative and general	11,271,039	1,552,470	5,459,248	1,331,652	146,346	19,760,754
Depreciation and amortization	9,737,142	1,403,552	4,810,674	1,407,061	185,971	17,544,399
Total operating expenses	<u>65,124,991</u>	<u>10,645,097</u>	<u>16,543,389</u>	<u>3,963,876</u>	<u>466,959</u>	<u>96,744,311</u>
Operating Income (Loss)	<u>15,236,922</u>	<u>1,087,323</u>	<u>1,100,004</u>	<u>554,803</u>	<u>(187,252)</u>	<u>17,791,800</u>
Nonoperating Revenues (Expenses)						
Allowance for funds used during construction	42,413	8,407	12,193	3,566	613	67,192
Investment and interest income	2,009,019	54,762	675,480	814,614	467	3,554,341
Interest expense	(1,801,932)	(1,172,452)	(603,108)	(297,593)	(34,803)	(3,909,888)
Jobbing, net	231,973	14,643	198,879	253,935	991	700,421
Income from joint venture	86,215	-	-	-	-	86,215
Other	145,071	(51,793)	(158,715)	(14,435)	(6,863)	(86,735)
Total nonoperating revenues (expenses)	<u>712,758</u>	<u>(1,146,434)</u>	<u>124,730</u>	<u>760,086</u>	<u>(39,595)</u>	<u>411,546</u>
Change in Net Assets	<u>\$ 15,949,681</u>	<u>\$ (59,110)</u>	<u>\$ 1,224,734</u>	<u>\$ 1,314,889</u>	<u>\$ (226,847)</u>	<u>\$ 18,203,346</u>

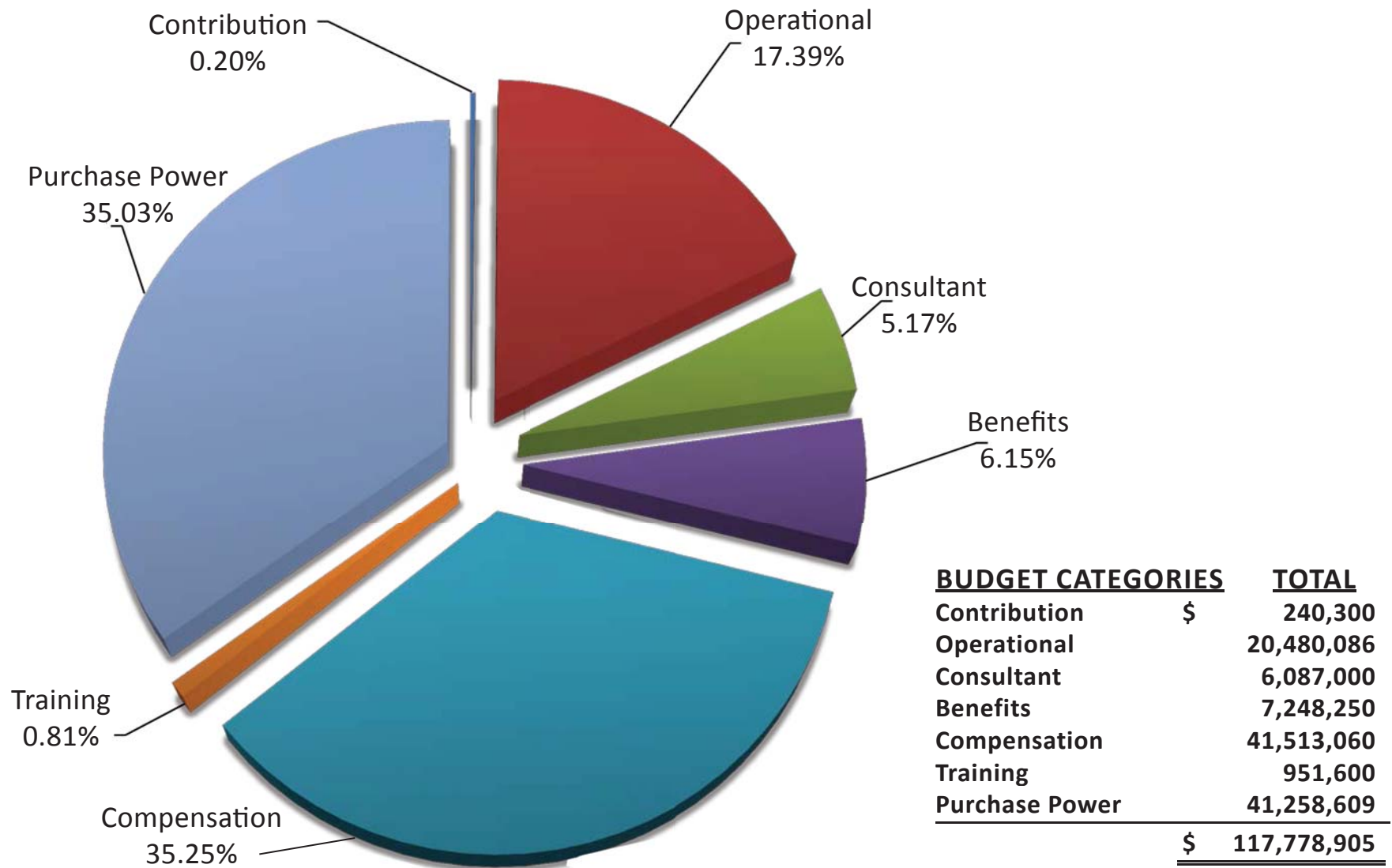
2014 Financial Forecast

	Electric	Gas	Water	Wastwater	Photovoltaic	Total
Available Funds						
Add: Change in Net Assets	\$ 15,949,681	\$ (59,110)	\$ 1,224,734	\$ 1,314,889	\$ (226,847)	\$ 18,203,346
Add: Depreciation Expense	9,737,142	1,403,552	4,810,674	1,407,061	185,971	17,544,399
Add: Principal Payments from Notes	182,628	-	-	-	-	182,628
Less: Principal Payments to Long Term Debt	(10,192,934)	(1,145,107)	(1,697,270)	(501,463)	(103,846)	(13,640,619)
Total Available Funds	<u>15,676,517</u>	<u>199,335</u>	<u>4,338,138</u>	<u>2,220,486</u>	<u>(144,722)</u>	<u>22,289,754</u>
Available Financing & Contributions						
RUS Financing	42,526,055	-	-	-	380,000	42,906,055
Great Western Bank Financing	-	6,984,393	-	-	-	6,984,393
Utility Specific Contributions	10,699,217	63,000	15,429,224	12,255,215	-	38,446,657
Total Financing & Contributions	<u>53,225,272</u>	<u>7,047,393</u>	<u>15,429,224</u>	<u>12,255,215</u>	<u>380,000</u>	<u>88,337,104</u>
Total Funds Available for Capital Budget	<u>68,901,788</u>	<u>7,246,728</u>	<u>19,767,363</u>	<u>14,475,701</u>	<u>235,278</u>	<u>110,626,858</u>
Total Capital Budget						
Utility Capital Budget	58,031,456	8,422,315	20,593,779	15,098,706	688,000	102,834,257
Common Budget	4,303,803	620,368	2,126,311	621,919	82,199	7,754,599
Total Capital Budget	<u>62,335,259</u>	<u>9,042,683</u>	<u>22,720,090</u>	<u>15,720,625</u>	<u>770,199</u>	<u>110,588,856</u>
Net Balance (Additional Funding Needed)	<u>\$ 6,566,529</u>	<u>\$ (1,795,955)</u>	<u>\$ (2,952,727)</u>	<u>\$ (1,244,924)</u>	<u>\$ (534,921)</u>	<u>\$ 38,002</u>

2014 Approved Capital Budget



2014 Approved O&M Budget



NAVAJO TRIBAL UTILITY AUTHORITY

An Enterprise of the Navajo Nation

www.ntua.com • 928-729-5721 • 1-800-528-5011



HEADQUARTERS

P.O. Box 170, Fort Defiance, Arizona 86504
Telephone Number: 928-729-5721
Toll Free: 14-800-528-5721
Fax Number: 928-729-2135
Web Site: www.ntua.com

- General Manager Walter W. Haase, PE
- General Manager - Wireless Micheal Scully
- Deputy General Manger Rex Kontz
- Deputy General Manger-Utility Operations Glenn Steiger

Divisions:

- Data Center Michael Hazel
- Engineering & Technical Services Wally Chief
- Finance & Accounting Tom Nelson
- Human Resources Paul Bemore, Sr.
- Information Technology Savoy Yazzie
- Safety Kenneth Begay
- Communicaitons Lester Lee

Chinle District

P.O. Box 549, Chinle, Arizona 86503

- District Manager Rubianne Dugi
- Office Supervisor Ruby Charley
- Field Superintendent Alfred Dugi
- Customer Service Supervisor Sherwin Curley

Dilkon District

HC 63 Box D, Winslow, Arizona 86047

- District Manager - Acting Johathan Curley
- Office Supervisor Annelita Spencer
- Field Superintendent Johathan Curley
- Customer Service Supervisor Isabelle Lang

Fort Defiance District

P.O. Box 587, Fort Defiance, Arizona 86504

- District Manager Daniel Wauneka
- Office Supervisor Andrea Nez
- Field Superintendent Wendell Damon
- Customer Service Supervisor Laura Sloan

Crownpoint District

P.O. Box 1825, Crownpoint, New Mexico 87313

- District Manager Philemon Allison
- Office Supervisor Lucy Cayatineto
- Customer Service Supervisor *

Kayenta District

P.O. Box 37, Kayenta, Arizona 86033

- District Manager Vircyntia Charley
- Office Supervisor Sadie Crank
- Field Superintendent Ronald Begay
- Customer Service Supervisor Marcella Black

Shiprock District

P.O. Box 1749, Shiprock, New Mexico 87420

- District Manager Eugene John
- Office Supervisor Rebecca Benally
- Field Superintendent Herbert Beyale, Jr.
- Customer Service Supervisor Alen Wallace
- Sub-Office Locations Red Mesa, AZ and Nageezi, NM

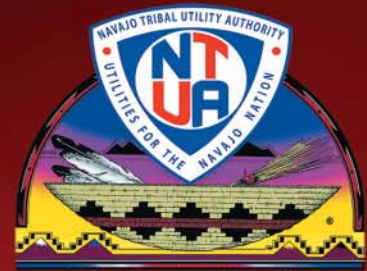
Tuba City District

P.O. Box 398, Tuba City, Arizona 86045

- District Manager Dale Luna
- Office Supervisor *
- Field Superintendent Dennison Young
- Customer Service Supervisor Delaine Henry

*Vacant Position

2014 Navajo Tribal Utility Authority



An Enterprise of the Navajo Nation

January Yasniitees

Sunday	Monday	Tuesday	Wednesday	Thursday	Friday	Saturday
			1 OFFICE CLOSED New Year's Day	2	3	4
5	6	7	8	9	10	11
12	13	14	15	16	17	18
19	20 OFFICE CLOSED Martin Luther King, Jr. Day	21	22 Anniversary	23	24	25
26	27	28	29	30	31	

February Atsábiyáázh

Sunday	Monday	Tuesday	Wednesday	Thursday	Friday	Saturday
						1
2	3	4	5	6	7	8
9 Groundhog Day	10	11	12	13	14	15
16	17 OFFICE CLOSED President's Day	18	19 Lincoln's Birthday	20	21 Valentine's Day	22
23	24	25	26	27	28	

March Wóózhchííid

Sunday	Monday	Tuesday	Wednesday	Thursday	Friday	Saturday
						1
2	3	4	5	6	7	8
9	10 Read Across America Day	11	12 Ash Wednesday	13	14	15
16	17	18	19	20	21	22
23	24 St. Patrick's Day	25	26	27 Spring Begins	28	29
30	31					

April Tááchil

Sunday	Monday	Tuesday	Wednesday	Thursday	Friday	Saturday
		1 April Fool's Day	2	3	4	5
6	7	8	9	10	11	12
13	14	15	16	17	18	19
20 Palm Sunday	21 Tax Day	22	23 Administrative Professionals Day	24	25 Good Friday	26
27 Easter	28 OFFICE CLOSED Navajo Nation Sovereignty	29	30 Earth Day			

May Tááts'oh

Sunday	Monday	Tuesday	Wednesday	Thursday	Friday	Saturday
				1 National Day of Prayer	2	3
4	5	6	7	8	9	10
11	12	13	14	15	16	17
18 Mother's Day	19	20	21	22	23	24
25 OFFICE CLOSED	26 Memorial Day	27	28	29	30	31

June Yááishjáashchilí

Sunday	Monday	Tuesday	Wednesday	Thursday	Friday	Saturday
1 OFFICE CLOSED Navajo Nation Memorial Day	2	3	4	5	6	7
8	9	10	11	12	13	14
15	16	17	18	19	20	21 Flag Day
22 Father's Day	23	24	25	26	27	28 Summer Begins
29	30					

July Yááishjáásts'oh

Sunday	Monday	Tuesday	Wednesday	Thursday	Friday	Saturday
		1	2	3 OFFICE CLOSED	4	5
6	7	8	9	10	11	12
13	14	15	16	17	18	19
20	21	22	23	24	25	26
27	28	29	30	31		

August Biníant'áats'ózi

Sunday	Monday	Tuesday	Wednesday	Thursday	Friday	Saturday
					1	2
3	4	5	6	7	8	9
10	11	12	13 OFFICE CLOSED	14	15	16
17	18	19	20 Navajo Nation Code Talker Day	21	22	23
24	25	26	27	28	29	30
31						

September Biníant'áats'oh

Sunday	Monday	Tuesday	Wednesday	Thursday	Friday	Saturday
	1 OFFICE CLOSED	2	3	4	5	6
7 Labor Day	8	9	10	11	12	13
14 Grandparents' Day	15	16	17	18 Patriot Day	19	20
21	22	23	24	25	26	27
28	29	30				

October Ghaají

Sunday	Monday	Tuesday	Wednesday	Thursday	Friday	Saturday
			1	2	3	4
5	6	7	8	9	10	11
12	13 OFFICE CLOSED	14	15	16	17	18
19 Columbus Day	20	21	22	23 Boys' Day	24	25
26	27	28	29	30	31	

November Nííchíits'ósi

Sunday	Monday	Tuesday	Wednesday	Thursday	Friday	Saturday
						1
2	3	4	5	6	7	8
9	10	11 OFFICE CLOSED	12	13	14	15
16	17	18 Veterans' Day	19	20	21	22
23	24	25	26 OFFICE CLOSED	27 OFFICE CLOSED	28	29
30						

December Nííchíits'oh

Sunday	Monday	Tuesday	Wednesday	Thursday	Friday	Saturday
	1	2	3	4	5	6
7	8	9	10	11	12	13
14 Pearl Harbor Remembrance Day	15	16	17	18	19	20
21	22	23	24 OFFICE CLOSED	25	26	27
28	29	30	31 OFFICE CLOSED			

Chinle
P.O. Box 549
Chinle, AZ 86503

Crownpoint
P.O. Box 1825
Crownpoint, NM 87313

Dilkon
HC 63 Box D
Winslow, AZ 86047

Fort Defiance
P.O. Box 587
Ft. Defiance, AZ 86504

Kayenta
P.O. Box 37
Kayenta, AZ 86033

Shiprock
P.O. Box 1749
Shiprock, NM 87420

Red Mesa & Nageezi
P.O. Box 1749
Shiprock, NM 87420

Tuba City
P.O. Box 398
Tuba City, AZ 86045

P.O. Box 170

Fort Defiance, Arizona 86504

www.ntua.com

1-928-729-5721 or toll free 1-800-528-5011

Electric Natural Gas Water Wastewater Renewable Energy Telecommunications





Navajo Tribal Utility Authority
An Enterprise of the Navajo Nation